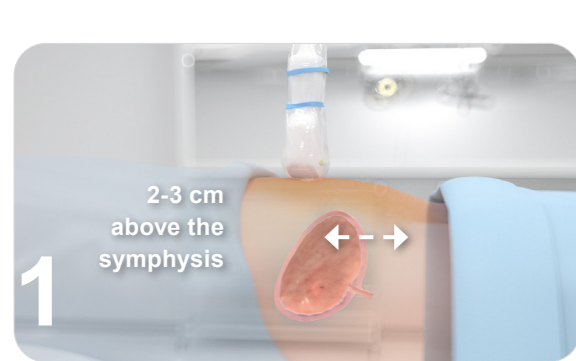


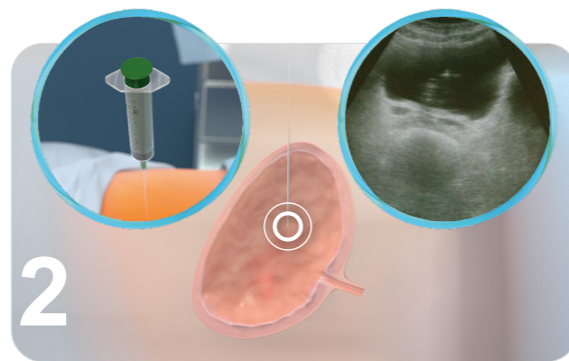
UROmedCYST »integral« Suprapubic Puncture Set – REF 3020

Installation of a suprapubic silicon balloon catheter for bladder drainage



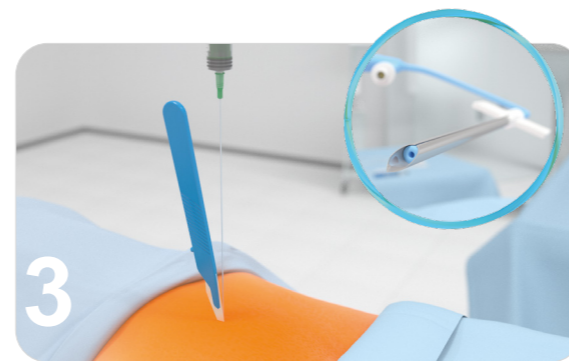
The exact position of the bladder and the puncture site are determined sonographically.

The puncture site is located about 2-3 cm above the symphysis on the linea alba.



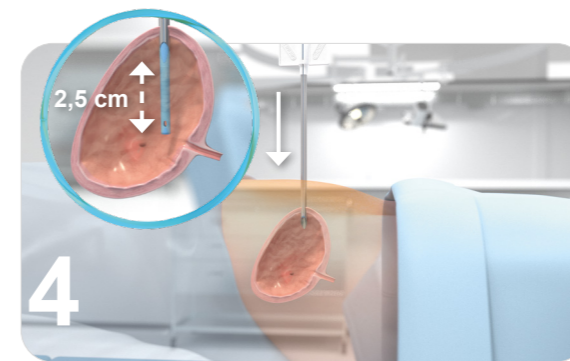
A test puncture and, if necessary, aspiration is now carried out using the puncture cannula.

Anaesthesia is performed using a local anaesthetic.



A puncture incision is made in the skin with a scalpel.

Before the puncture, the catheter is positioned in the split cannula so that the catheter tip ends at the short side of the facet cut.

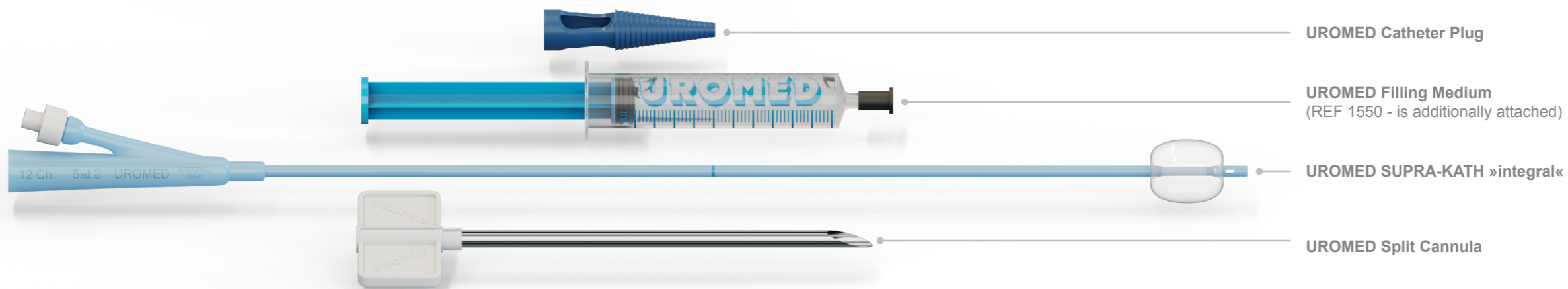


The urinary bladder is then punctured vertically using the split cannula.

To ensure that the balloon is completely inside the bladder, it is advanced a further 2,5 cm to at least the ring marking.



The catheter funnel is now connected to a suitable urine drainage system.



UROMED Catheter Plug

UROMED Filling Medium
(REF 1550 - is additionally attached)

UROMED SUPRA-KATH »integral«

UROMED Split Cannula



Application video
UROmedCYST »integral«

Caution: Pulling back the catheter while positioned in the split cannula can damage the catheter due to cannula facet cut.

The cannula is then pulled out above skin level. The balloon catheter remains in the body and can be fixed at the puncture site with a swab during this procedure.

The filling medium is attached to the block valve of the catheter. The suprapubic balloon catheter is slowly and carefully blocked using the sterile filling medium. Remove the filling medium from the block valve of the catheter as soon as the balloon is blocked. The urine is drained using the connected urine drainage system.

The split cannula is split outside the body by breaking the handle plates apart on both sides. Both halves are removed and then immediately disposed of.

At the end of the procedure, a dry dressing is applied and fixed in place. The transurethral catheter is left inside the body for some time to be used for irrigation, if required.

